

**ΟΜΙΛΗΤΗΣ:**

**EDUARDO RICO**

landscape urbanist, civil engineer, coordinator Master Landscape urbanism AA, London

**ΤΙΤΛΟΣ:**

**Tools for a territorial praxis.**

**Digital simulations and design interfaces for urban and landscape practices**

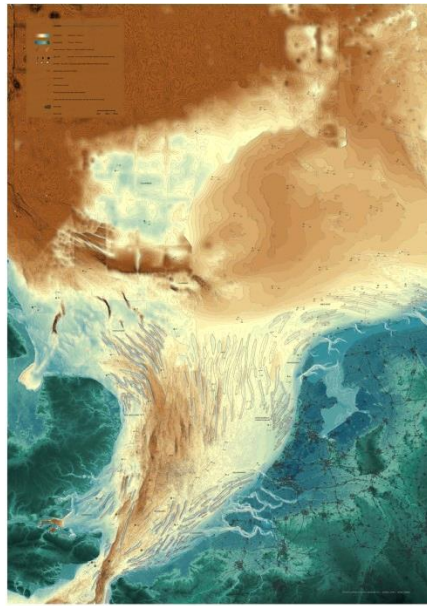
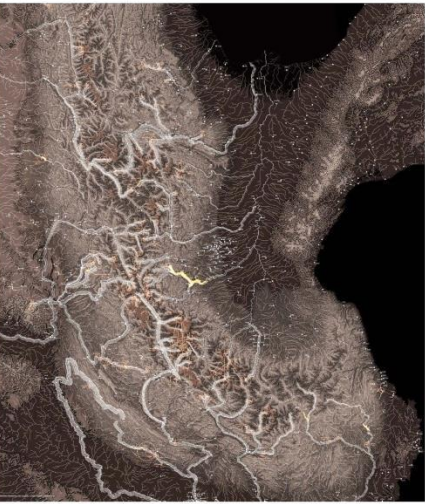
**KEYWORDS:** Digital Interfaces, Landscape simulation, Territory

The lecture outlines the idea of a form of praxis based on the research and critique of forms of analysis and representation of the social and material forces that shape the territory. Then it gives examples and precedents of these techniques but also the historical background and theoretical implications of the considering a "material" and "territorial" turns in their definition. It uses both academic research material as well as professional work in order to showcase both critical and practical implications of their use.

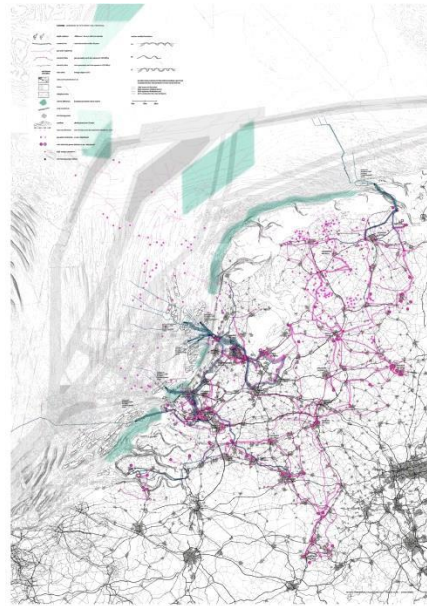
The lecture locates the work within a wider research on the forms of description and representation of landscapes and territories, to then situate this production within the contemporary "territorial" focus of design disciplines. The lecture then describes precedents and theories of the work on material forms of simulation at territorial scale to speculate on how these can be used as design tools within the advent of new digital tools. In particular it focuses on the use of physical simulation of landscape processes combined with digital forms of data capturing and ecological modelling. Examples of these models include generation of deltas, rivers and dune formations which take precedent on theories of dimensional analysis and hydraulic simulations within engineering disciplines.

The lecture then turns to describe the positioning of this work on material technologies within a wider project of looking at the relevance of spatial design at geographical scales inherent in the thinking of territories. It will link the material problem behind the use of simulations into the use of atlases as radical forms of re thinking policies at the scale of the European Union. The argument goes, is that the combination of a materialist view of social and natural formations can serve as a basis of a radicalized form of praxis dealing with the spatial specificity of landscapes and cities.

The lecture finishes by describing the integration of these forms of representation within digital interfaces designed to be used interactively by multiple stakeholders within the planning process. It will give both academic and practice examples of how these new tools (Relational Urban Models) allow the possibility of understanding the spatial implications of policy decisions, advancing the development of design and challenging the current forms of project documentation.

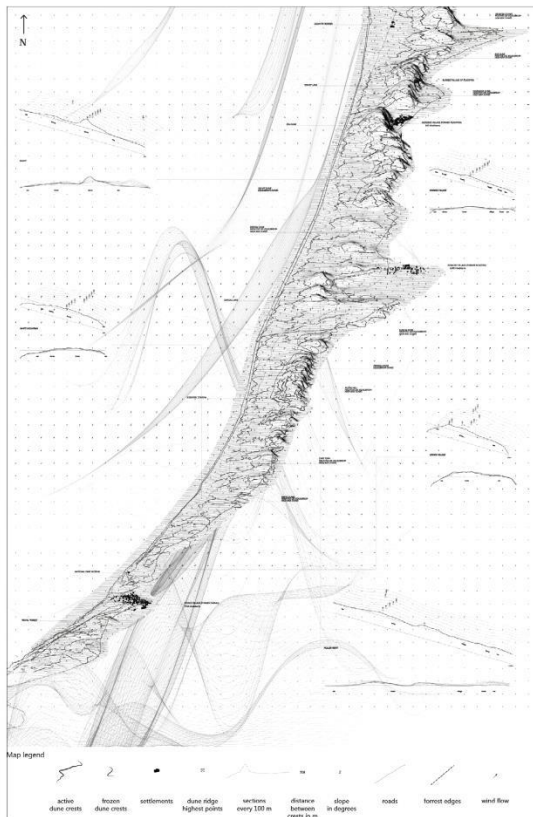


Sand bar system between Netherlands and British Isles

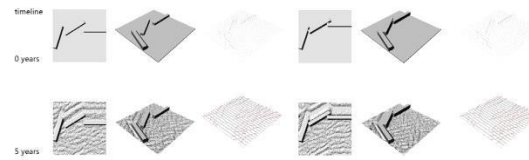


Energy landscape in the Netherlands and potential link to sandbar landscape for wind power source

• Jansheke Eggink, Eugenio Da Rin, Reconfiguration of energy landscapes off the coast of the Netherlands making use of existing sandbar submerged topography



Existing sand site levels and foredunes in Curonian spit



Cellular Automata simulation of sand dune movement (orientation study)



Cellular Automata simulation of sand dune movement (plan section study)

• Nikki Kaliki, Anastasia Kotenko, Studies of re-mobilization of sand dunes in forested and touristic areas along Curonian Spit in the Russian – Lithuanian border.

## ΔΙΑΛΕΞΗ ΣΤΟ ΠΛΑΙΣΙΟ ΤΩΝ ΜΑΘΗΜΑΤΩΝ

### ΑΡΧΙΤΕΚΤΟΝΙΚΗΣ ΤΟΠΙΟΥ

ΤΡΙΤΗ 02 ΙΟΥΝΙΟΥ 2015 ΣΤΟ Κ4

**EDUARDO RICO**

landscape urbanist

civil engineer

coordinator Master Landscape urbanism AA- London

**Tools for a territorial praxis:**

**Digital simulations and design interfaces for**

**urban and landscape practices**