

05/10/17 @ 17.00

Auditorium G2.2

Technical University of Crete
Kounoupidiana Campus
73100 Chania

Emergent Technologies & Design

Architectural Association, School of Architecture (London, UK)

Director: Michael Weinstock

Studio Master: Elif Erdine

Studio Tutors: Lidia Badarnah, Antiopi Koronaki, Alican Sungur

Consultant: Manja Van de Worp

In Emergent Technologies & Design Master Programme, the focus is on the experimental and social potential of new materials and spatial configurations for architectural and ecological urban systems, situated in the dynamic contexts of emerging biomes.

Entwine

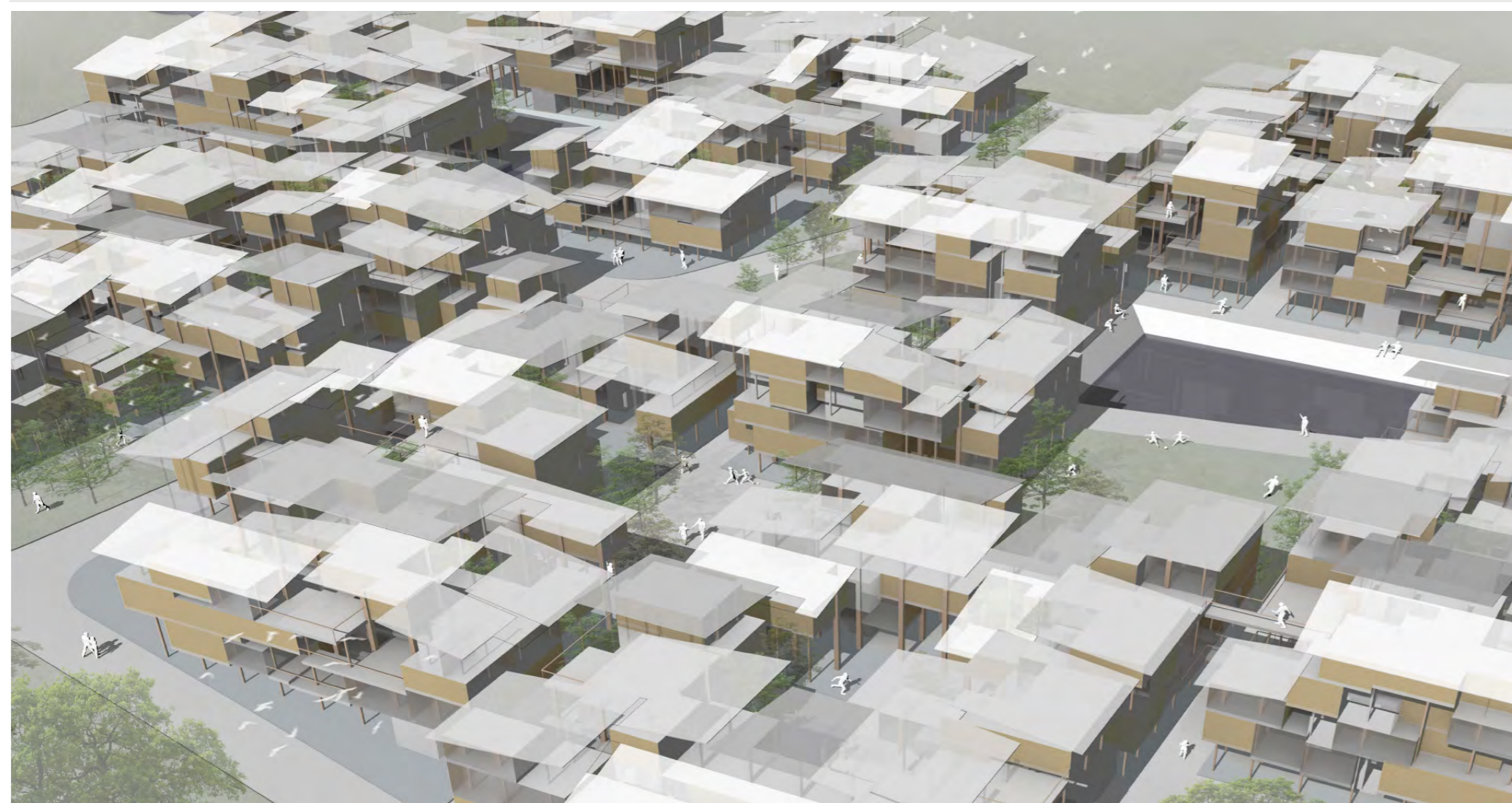
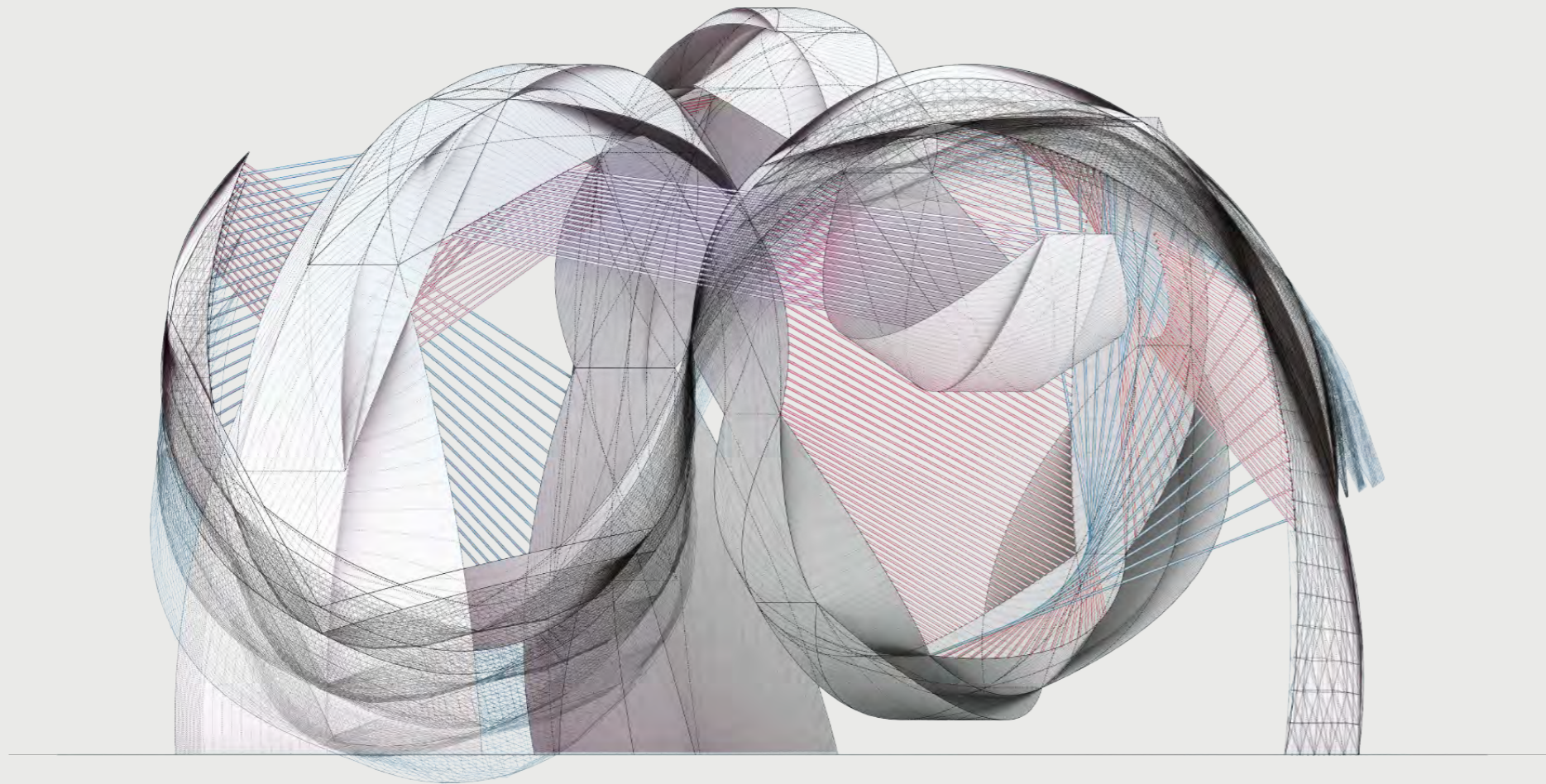
Speakers: M. Battisti, C. Perea, E. Shilova

The pavilion is the product of the 2017 Design & Build workshop within the Emtech programme at the AA. Its aim is to explore the relationships between material performance, design and fabrication. The pavilion is derived from intensive research on plywood composite material systems, specifically on curved plywood tensegrity. The project will be exhibited at the Timber Expo 2017 in Birmingham.

Tectonic of Informality

Speakers: Song Jie Lim, Varvara Vasilatou, Shih Hsin Wu

The dissertation aims at using an integrated urban and architectural system to generate an alternative design solution for the Kampung of Jakarta. One that accommodates mass customisation and growth, as well as mitigate flood risk. The overarching ambition of the thesis is in the proposal of a current design methodology which relates top-down and bottom-up approaches. With particular focus on the relationships and feedbacks between urban and architectural scales.



Technical
University
of Crete



TRANSFORMABLE
INTELLIGENT
ENVIRONMENTS
LABORATORY



[EmTech]
AA Emergent Technologies & Design
Graduate Programme